

# Unitarian Universalist Church in Cherry Hill

## Your Guests Will Find Us Easily

You won't believe such a quiet facility could be so centrally-located in busy Cherry Hill and so close to Philadelphia. We are convenient to Haddonfield, Moorestown and other communities, and just minutes from the New Jersey Turnpike (Exit 4), Interstate 295, and U.S. Routes 38, 70 and 73. On-site parking is available for 143 cars.

## We Welcome Your Visit

We would be very pleased to discuss your needs, show you around our grounds and facilities, and provide you with a detailed list of rental fees. You may reserve any combination of our spaces or all of them, whichever best meets your group's needs, based on availability. We can provide a list of local caterers to help plan and cater your event.

## Unitarian Universalist Church in Cherry Hill

401 N. Kings Highway,  
Cherry Hill, NJ 08034  
856-667-3618

Fax: 856-667-9552

E-mail: [uucch@aol.com](mailto:uucch@aol.com)

Web: <http://uucch.org/rent-our-space>

On a wooded hilltop in Cherry Hill...



... a special place for your wedding  
or group function

## Charm and Modernity

From a restored, 200-year-old farmhouse to a new, state-of-the-art 3,100 square-foot social hall, the Unitarian Universalist Church in Cherry Hill offers your group a wide variety of flexible meeting spaces - all nestled amidst a quiet, 17-acre arboretum and centrally located near major South Jersey highways. With our customizable resources and individual attention to your needs, you can be sure your event will run smoothly and provide lasting memories of a wonderful occasion.



*Church Entrance*



## A Tranquil 17-acre Arboretum

From a grassy frontage on busy Kings Highway, a tree-lined drive leads up the hill to our complex at the top. There, our large church building houses the Sanctuary, Commons, Fellowship

Hall, four classrooms/meeting rooms, and other facilities. A hallway connects the church to the restored Unitarian House, featuring the genteel Horsch Room. Across the driveway is the Hillside Building and its meeting rooms for groups up to 50. Located down the hill is the Woodland Building which houses a full-time nursery school on weekdays.

The grounds have been designed and maintained as an arboretum by a church member who is a landscape architect.

### The Richness of Diversity

The Unitarian Universalist Church in Cherry Hill is a diverse and open-minded religious community. We provide sanctuary for the expression of individuality and welcome all those who value and honor the richness of diversity. Many couples of differing religious backgrounds have the environment they seek here for marriages and commitment ceremonies.

### Personal Service and Attention

As a friendly, community-based organization, we will do our best to make sure your event is smooth-running and hassle-free. Our Building Use Manager will see that the facilities are in good shape and set up to your specifications.

### Unitarian Universalist Church in Cherry Hill

401 N. Kings Highway,  
Cherry Hill, NJ 08034  
856-667-3618

Fax: 856-667-9552

E-mail: [uucch@aol.com](mailto:uucch@aol.com)

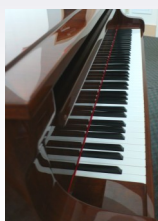
Web: <http://uucch.org/rent-our-space>

## A Variety of Comfortable Spaces

**Mix and match** our flexible spaces for your type of event and the size and needs of your group. Our facilities, all of which offer complete handicapped accessibility, are located in four buildings on our secluded campus. They include:

### The Sanctuary

Located in our spacious church building, the Sanctuary features soaring ceilings with skylights and huge windows overlooking a forest. With space for over 300 persons on comfortable, upholstered chairs and cushioned perimeter benches, the room is appropriate for more formal uses such as weddings, keynote addresses and musical performances.



We have a top-quality August Forster grand piano to accommodate any occasion from weddings to concerts. Our Music Director will be pleased to assist you with your musical planning and provide accompaniment or incidental music where needed. A state-of-the-art sound system and a large stage with a moveable podium complete what could be the perfect site for

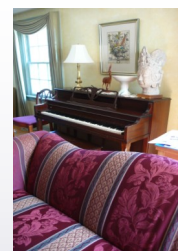
your event. Food and beverages may be prepared in the nearby Pantry Kitchen and served in the Commons.

### Fellowship Hall

Directly beneath the Sanctuary, our social hall comfortably accommodates 150 guests at round tables—and still leaves room for dancing! Serve your guests from our commercial kitchen. Tables and chairs are provided. The space can be ideal for awards dinners, anniversary parties, and family reunions.

### The Horsch Room

Located in a restored, 200 year-old farmhouse filled with antiques and fine appointments, this intimate library is ideal for smaller receptions, weddings, commitment ceremonies, memorial services, and meetings of 30 persons or less.



### The Bell Garden

An intimate corner of our gracious campus, the Bell Garden is best for summer weddings, family picnics, anniversary celebrations and memorial services. Picnic tables are available. An adjacent room can handle most needs in case of rain.

### Meeting Rooms

A wide variety of meeting rooms for smaller sessions are available as needed. Our largest, located in the Hillside Building, is a great location for workgroups up to 50 and features tables, chairs and sliding glass doors opening up on a woody dell. A small pantry is available for the preparation of light refreshments.